

## STUFA IDRO



Stufa a legna, pellet e nocciolino dal design contemporaneo per la produzione di acqua calda. Predisposizione kit acqua calda sanitaria.

- Monoblocco in acciaio
- Pulizia ciclica del braciere
- Scarico fumi di serie
- Telecomando
- Braciere in acciaio
- Piano superiore in acciaio
- Centralina di programmazione
- Kit acqua calda sanitaria (optional)
- Maniglia in acciaio verniciato
- Rivestimento in acciaio verniciato
- Cassetto cenere estraibile

Wood-burning, pellet and peanut stove with a contemporary design for the production of hot water. Predisposition for domestic hot water kit.

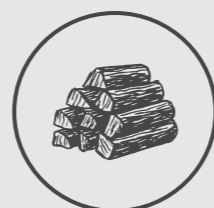
- Monobloc steel
- Cyclic cleaning of the brazier
- Standard fume exhaust
- Remote control
- Steel brazier
- Upper top in steel
- Programming control unit
- Domestic hot water (optional)
- Painted steel handle
- Painted steel coating
- Removable ash drawer

CERTIFICATA  
**5 STELLE ★★★★★**

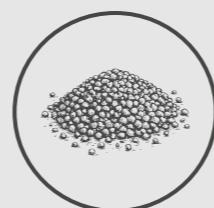
PROGETTATA E COSTRUITA IN ITALIA



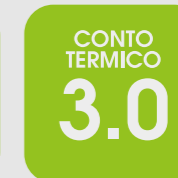
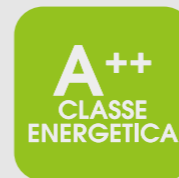
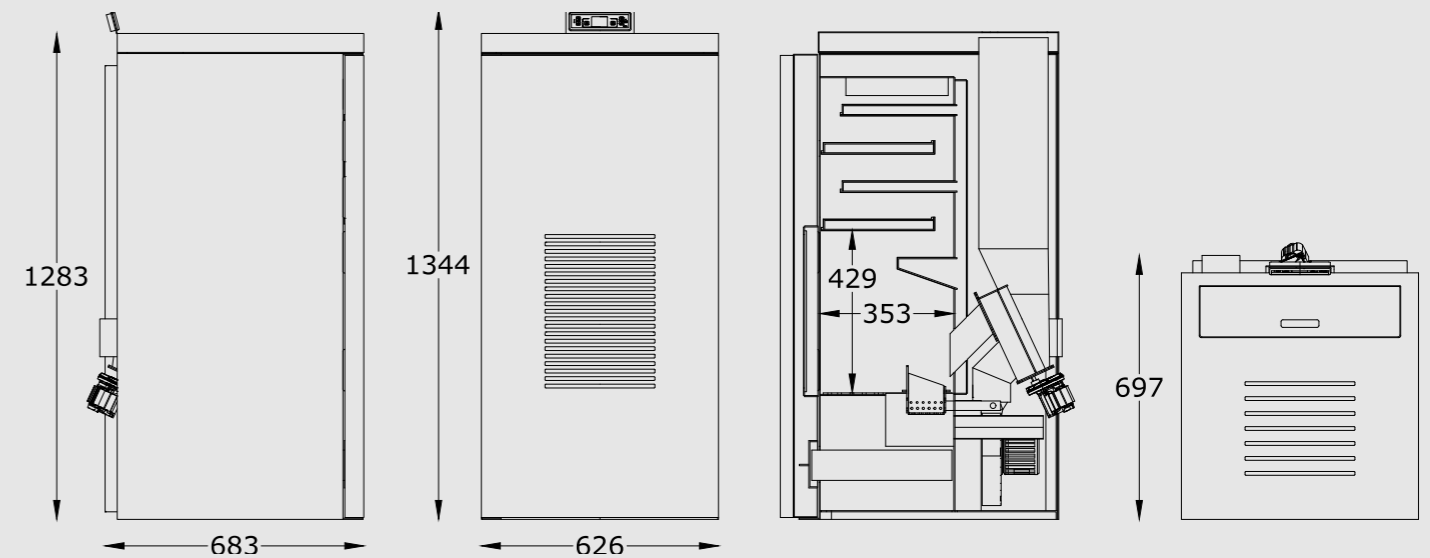
PELLET



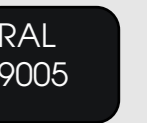
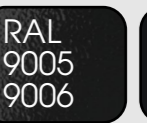
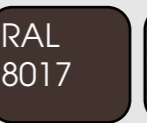
LEGNA



NOCCIOLINO  
DI SANSÀ



### COLORAZIONI



<b>Dimensioni</b> Dimensions	<b>cm</b>	<b>62,6LX68,3PX130,0H</b>
<b>Peso netto</b> Net weight	<b>Kg</b>	<b>230</b>
<b>Volume riscaldabile</b> Room heating capacity	<b>m3</b>	<b>730/840</b>
<b>Metri quadri riscaldabili</b> Room heating capacity	<b>m2</b>	<b>260/300</b>
<b>Potenza termica del focolare</b> Firebox heat output	<b>KW</b>	<b>8,6/33,6</b>
<b>Potenza termica nominale</b> Nominal heat output	<b>KW</b>	<b>8/29,5</b>
<b>Rendimento termico</b> Thermal efficiency	<b>%</b>	<b>93/88</b>
<b>Consumo nominale</b> Nominal consumption	<b>Kg/h</b>	<b>1,7/6,7</b>
<b>Capienza serbatoio</b> Hopper capacity	<b>litri/Kg</b>	<b>46/30</b>