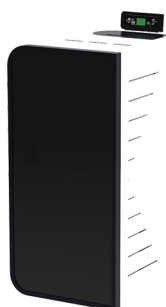


Stufa a pellet dal design contemporaneo,
per la produzione di acqua da riscaldamento
con sistema di ventilazione regolabile.
Predisposizione kit per acqua calda sanitaria.

Pellet stove with a contemporary design,
for the production of water by heating
with adjustable ventilation system.
Preparation kit for domestic hot water.

- Monoblocco in acciaio
- Maniglia in acciaio verniciato
- Deflettore d'aria
- Cassetto cenere estraibile
- Centralina di programmazione
- Pulizia ciclica del braciere
- Braciere in acciaio
- Rivestimento in acciaio verniciato
- Piano superiore in acciaio verniciato
- Scarico fumi di serie
- Telecomando
- Acqua calda sanitaria (optional)

- Monobloc stainless steel
- Painted steel handle
- Air deflector
- Removable ash drawer
- Control programming
- Cleaning cyclic brazier
- Stainless brazier
- Coating painted steel
- Top in painted steel
- Exhaust fumes series
- Remote control
- Hot water (optional)



Cod. ST17/18/19 (white)



Cod. ST17/18/19 (black)



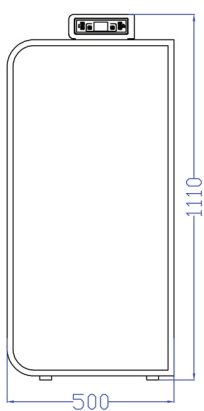
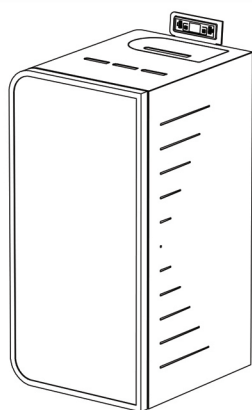
Cod. ST17/18/19 (ivory)



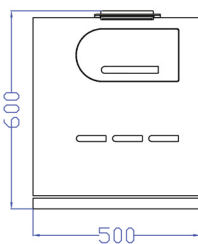
Cod. ST17/18/19 (red)



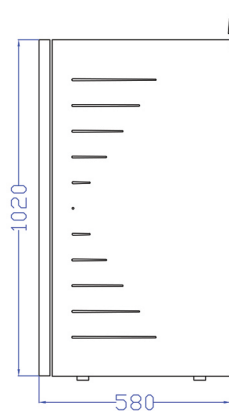
Cod. ST17/18/19 (wengè)



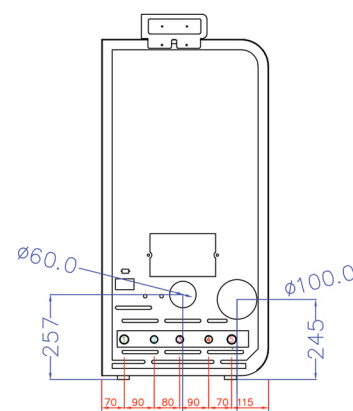
Fronte / Front



Alto / Top



Lato destro / DX side



Retro / Back side

Disponibile in tre versioni: 24 Kw / 22Kw / 20 Kw

Dimensioni (cm) / Dimensions (cm)	50.L x 60 P x 108 H / 104 H / 102 H
Peso netto (Kg) / Net weight (Kg)	180 / 175 / 170
Volume riscaldabile (m ³) / Room heating capacity (m ³)	590 / 545 / 500
Metri quadri riscaldabili (m ²) / Room heating capacity (m ²)	220 / 200 / 185
Potenza termica del focolare (kW) / Firebox heat output	24 / 22 / 20,1
Potenza termica nominale / Nominal heat output (kW min-max)	7,1>22,5 / 6,6<20,7 / 5,9>18,9
Rendimento termico / Thermal efficiency (%)	94
Consumo nominale / Nominal consumption (Kg min-max)	1,70>5,40 / 1,60<4,95 / 1,41>4,40
Capienza serbatoio / Hopper capacity (litri - Kg circa)	55 litri . 35 Kg